

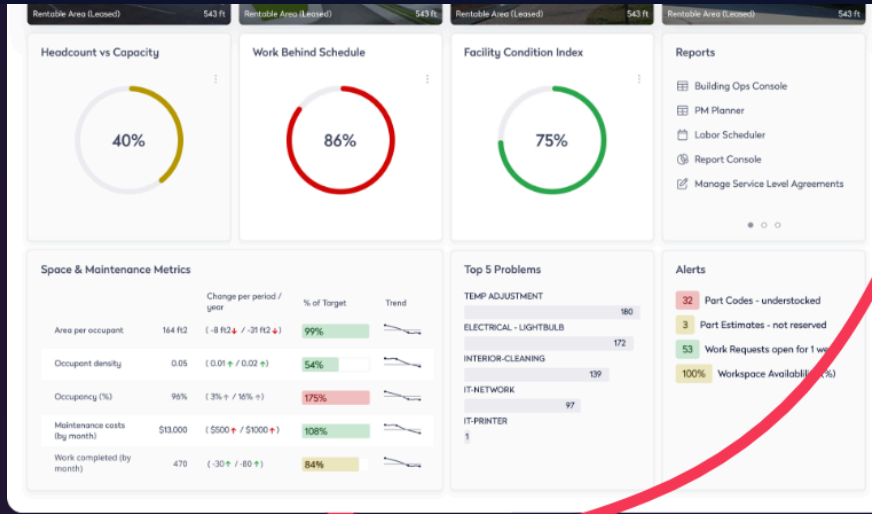


ARCHIBUS BY EPTURA

Make every part of your facility easier to manage, all in one place

Archibus brings together everything facility leaders need to run,
maintain, and improve built environments.

Get a demo



SOLD EXCLUSIVELY BY OUR PARTNERS

Powering 50% of the Fortune 500





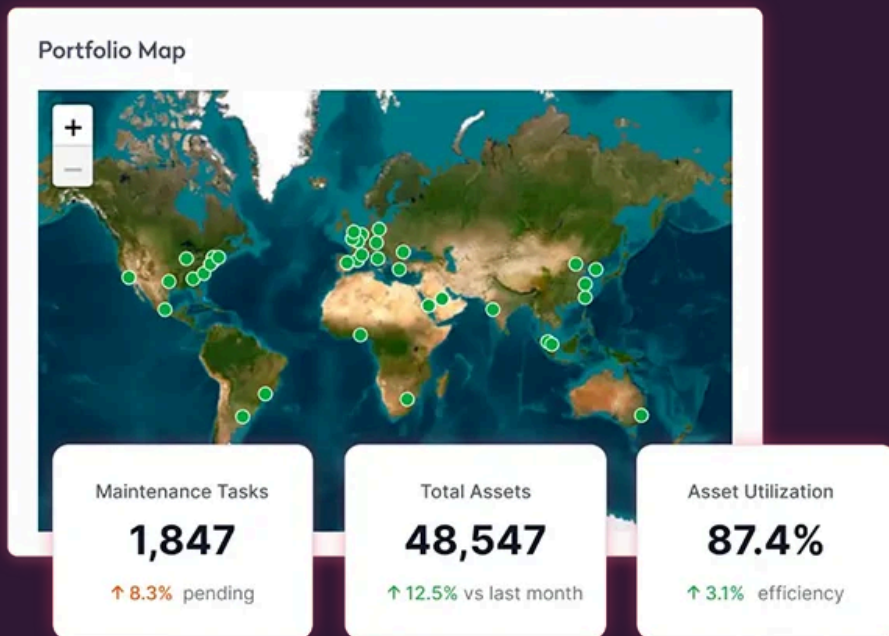
work easier

FOR FACILITY MANAGERS

Centralize daily operations

Archibus brings all your facility management tasks into one easy-to-use platform. Oversee maintenance, space planning, and asset tracking from a single dashboard. Save time, reduce manual work, and keep everything running smoothly, so you can focus on what matters most.

[Get a demo →](#)

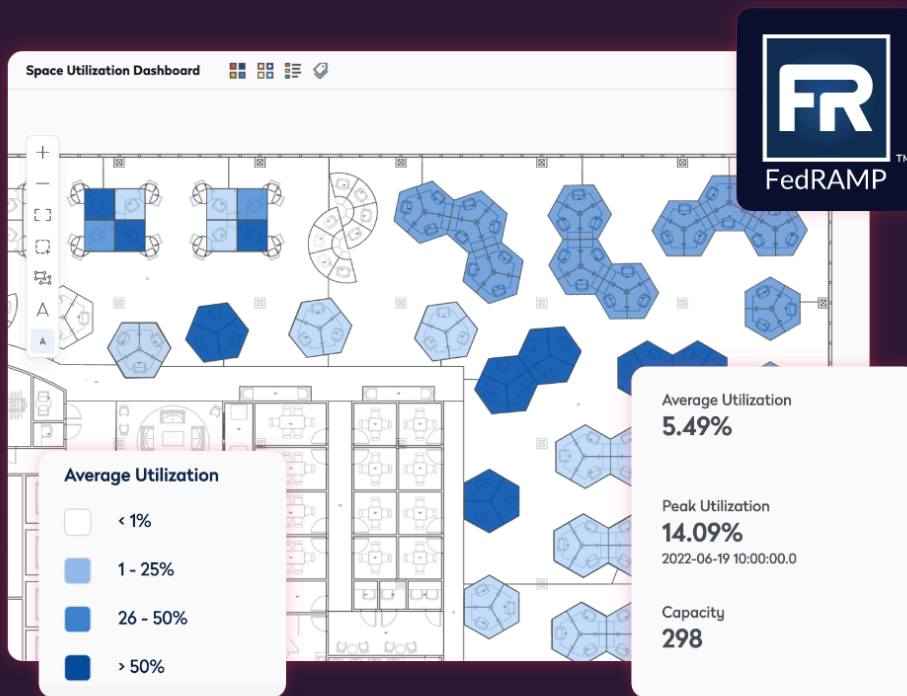




Compliance

Archibus is built for organizations with strict security and compliance needs. With FedRAMP Authorization for government and regulated industries, you get peace of mind knowing your data is protected, and your operations meet the highest standards.

[Get a demo →](#)

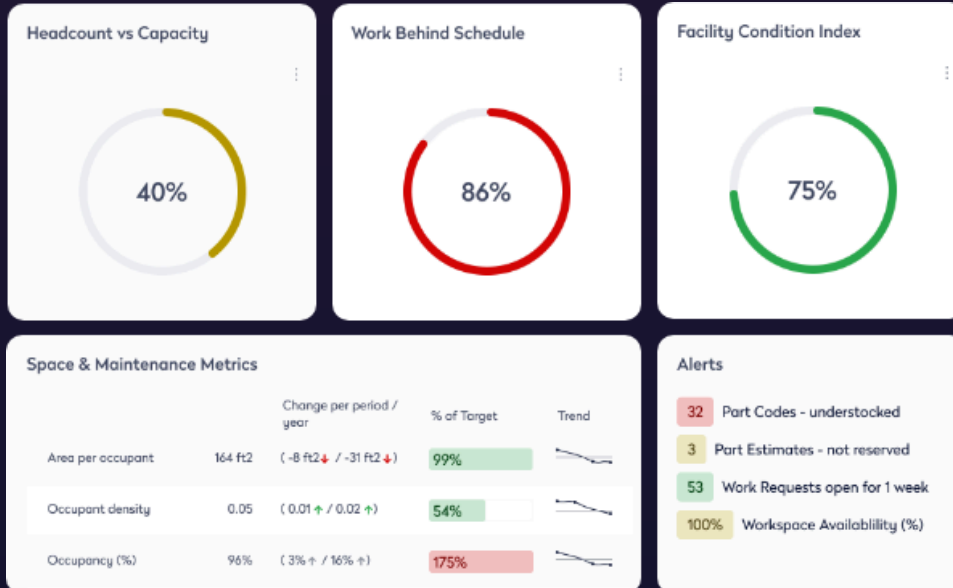


FOR EXECUTIVE LEADERS

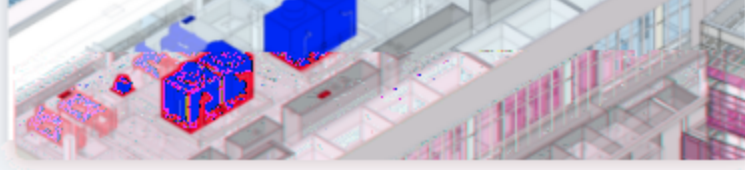
See the big picture, make better decisions



Get a demo →

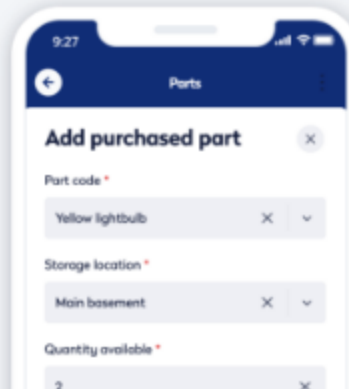


Everything you need for facility management, all together



BIM-powered asset management

Track every asset's lifecycle, location, and condition. Use the BIM Viewer to see spaces and equipment in detail, plan maintenance, and make smarter decisions without needing to be a Revit expert.



Empower field technicians

Field technicians can review parts, update tasks, and log work from any device, even offline. Real-time inventory and clear records help teams finish jobs faster and keep assets in top shape.

[Archibus OnSite →](#)



Capital project tracking

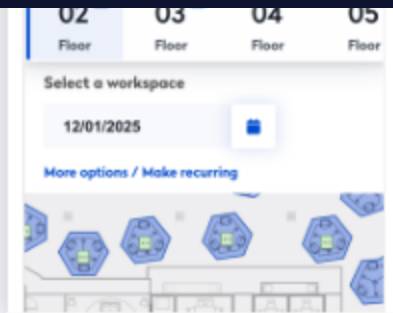
Plan, budget, and manage capital projects from start to finish. Monitor milestones, control costs, and keep everyone on the same page for better results and accountability.

[Capital project management →](#)



Space planning and hybrid work

Visualize, plan, and manage workspaces with drag-and-drop layouts and BIM integration. Support hybrid teams, maximize utilization, and adapt quickly as needs change.



Easy workspace booking

Book rooms and desks, find colleagues, and manage services in one place. Employees get a smoother experience, and managers get better visibility into how spaces are used.

[Workplace experience →](#)

Lease Administration

Landlord Name	Building	Lease Type	Start Date	End Date
Brighton Ma...	Fort Coll...	Net	3/1/2020	2/28/2025
Cityscapes	Harbor R...	Percentage	5/1/2020	4/30/2025
Levin Real Es...	Sussex H...	Triple Net	9/15/2023	8/31/2027
High Rock	Bay Stat...	Gross	8/1/2017	7/31/2027
TCL Real Est...	Market S...	Net	11/1/2023	10/31/2027

Leases expiring soon

- 2/28: Fort Collins HQ, Floor 12
- 4/30: Harbor Research Center, Floor 02
- 3 more

Lease and contract management

Centralize lease data, automate alerts, and analyze costs. Manage property contracts, renewals, and compliance with dashboards and interactive mapping tools.



eptura™
for government

Modernize government facility management

Archibus for Government is a FedRAMP Authorized solution that helps federal agencies manage buildings, assets, and people securely while meeting strict compliance standards. Streamline operations, meet compliance, and optimize space with real-time data and automated reporting. Agencies can easily reallocate costs and optimize every square foot.

[Archibus for Government](#)



Designed to optimize your built environment

Archibus and Autodesk keep your facilities running smoothly with seamless integration. Archibus integrates space, asset, facilities, and infrastructure data with BIM models and Autodesk, allowing full building lifecycle management, robust data management, and visualization experience.

[Learn more about our Autodesk Alliance →](#)



Connect with leading platforms

Archibus offers a range of extensions and frameworks, enhancing its functionality and integration capabilities. Connect with Microsoft, Autodesk, GIS, visitor management, and IoT systems to centralize data, automate workflows, and manage facilities smarter and more securely.

[Explore all integrations](#)



CUSTOMER STORIES

NOAA: 20% less spend with space insights

“Archibus gave us real-time visibility into our facilities, helping us optimize space, reduce costs, and improve compliance across our government portfolio.”

-Property Management Officer, NOAA

[Read the case study](#)



work your world™



CUSTOMER STORIES

UMass Medical: Shortened lease cycle times by 30%

“With Archibus, we centralized property data and automated lease workflows, saving time and supporting flexible campus operations for students and staff.”

-Director of Facilities, UMass Medical School

[Read case study](#)



work your world™



CUSTOMER STORIES

San Diego Gas & Electric: **99%** asset uptime

“ Archibus enabled us to track assets, schedule preventive maintenance, and ensure nearly perfect uptime—delivering reliability for our energy operations.”

-Asset Manager, San Diego Gas & Electric

[Read case study](#)



questions

Is Archibus FedRAMP Authorized, and does that authorization apply globally?

Archibus for Government is FedRAMP Authorized, meeting strict U.S. federal security standards. FedRAMP authorization is specific to U.S. government requirements and does not automatically apply to global deployments. For international compliance, Archibus offers additional security and regulatory options tailored to local standards. For more information visit [Archibus for Government](#)

How do I purchase Archibus by Eptura?

Archibus is sold exclusively through our global partner network. Partners provide expert guidance, implementation, and ongoing support to ensure you get the right solution for your organization's needs.

Can Archibus integrate with our existing systems?

Yes. Archibus connects with platforms like Microsoft, Autodesk, BIM, HR, finance, and analytics tools. These integrations help centralize data, automate workflows, and deliver real-time insights for smarter facility management.



Sign up to stay in the loop on new product updates, the latest innovations in worktech, and tips & tricks to help you work your world.

Keep me updated



COMPANY

We're a global worktech company that digitally connects people, workplaces, and assets in a unified platform to enable our customers to thrive.

[Our platform](#)

[Our vision](#)

[Our plans](#)

[Our values](#)

[Our products](#)

[Our impact](#)

[Who we partner with](#)

[Our team](#)

[Support](#)

[Our offices](#)

[Contact Us](#)

[Careers](#)



- Business
- Education
- Government
- Healthcare
- Manufacturing
- Software & tech
- Energy & transportation

DISCOVER

- Resource center
- Blog
- Customer stories
- Upcoming events
- Latest news
- Research
- Podcast



- Legal Terms
- Privacy Policy
- Fraud Prevention



Eptura Accessibility

All Rights Reserved © Eptura™

Call Us: 617.227.2508