



Information

Download PowerStrip

Product key

Version: 3.90
Released: 25 March 2012
File size: 1.4 MB

Registration and upgrades

PowerStrip 3 is discontinued, but the final release remains available to those interested by simply downloading and installing the shareware version above, along with a product key that removes all trial restrictions.

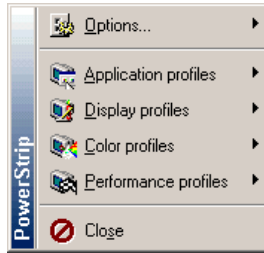
Technical support

Answers to frequently asked questions and general technical support can be found in the forums [here](#).

Other products

- iRotate
- MultiRes
- Monitor Asset Manager
- Legacy software

PowerStrip 3.9



PowerStrip provides advanced, multi-monitor, programmable hardware support to a wide range of graphics cards - from the venerable Matrox Millennium I to AMD Radeon graphics. It is the only program of its type to support multiple graphics cards from multiple chipset vendors, simultaneously, under every Windows operating system from Windows 95 to the x64-bit edition of Windows 7. A simple menu that pops up from the system tray provides access to some 500 controls over your display hardware, including sophisticated color correction tools, period level adjustments over screen geometry, and driver independent clock controls. A powerful application profiler can detect when programs are launched and respond by activating specific display settings, gamma adjustments, performance switches and even clock speeds - returning everything to normal when the program closes. In-game gamma hotkeys let you light up the darkest hallways during game play, and hardware control over refresh rates - with floating point precision - ensure you're never stuck at just 60Hz no matter what OS you're using. A quick setup wizard gets you up and running with minimal fuss, extensive context-sensitive help is available for all controls, and live updates are supported to ensure you're always running the latest release. Finally, an assortment of system and productivity tools - among them, extensive diagnostics, PCIe and AGP device configuration, EDID decoding, desktop icon management, a system idle thread, Windows resource monitoring, an anti-burn-in orbiting option, physical memory optimization, an on-screen display, and the most advanced monitor support in the industry - round out the compact 1MB package.

Advanced timing options

Use the controls in this dialog box to customize the signal output by your display adapter to your monitor. Timing parameters include the pixel clock, horizontal scan frequency and frame refresh rate, and the duration of the various periods during which the electron beam is moving across and down your screen - including both active and inactive or blank times.

For information on each control, use context-sensitive help or right-click on an item and select **What's this?** from the pop-up menu.

Warning: Selecting incorrect timing parameters may damage some monitors. For information on the parameters your monitor supports and expects, see your monitor documentation. In the event of a problem, keep in mind:

- Alt-R** resets the display and allows you to continue
- Esc** resets the display and closes
- Backspace** is an undo that cancels the last adjustment

Lock total geometry
 Lock scan frequencies
 Real-time adjustment

PowerStrip [Ok] [Cancel] [Apply]

Legacy support

PowerStrip 3 was intended for use with display cards manufactured up to 2008, but to protect your investment in even older hardware a wide range of otherwise orphaned display adapters are supported, including those based on chips from 3dix, Number Nine, Cirrus Logic, Rendition, S3, and Tseng Labs. However, a handful of chips supported by older versions of PowerStrip were regrettably dropped from Version 3. If needed, PowerStrip 2.78 continues to be available to registered users [here](#).