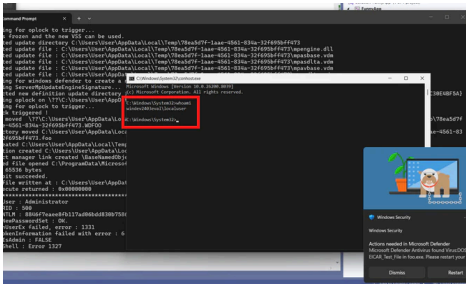


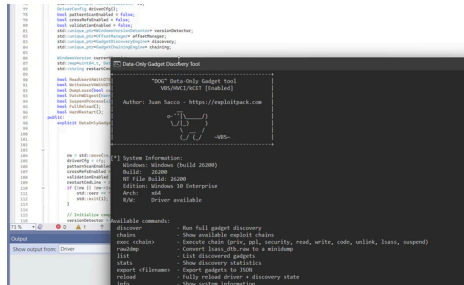
Our latest technical articles



BlueHammer Analysis (Defender LPE)

APRIL 7, 2026

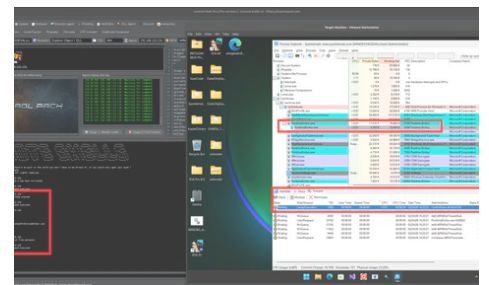
The BlueHammer exploit for Windows Defender, recently disclosed by Nightmare Eclipse, probably won't be added to Exploit Pack unless there is a strong demand for it. Original source: <https://github.com/Nightmare-Eclipse/BlueHammer> Thanks to...



DOG - Data Only Gadgets

MARCH 24, 2026

What is DOG? DOG, short for Data Only Gadgets, is a post-exploitation tool that uses your existing kernel read/write primitives to locate, classify, and chain kernel gadgets, resolve the structures...



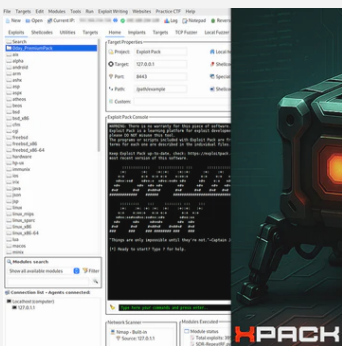
"The Watchdog" in Control Pack

MARCH 4, 2026

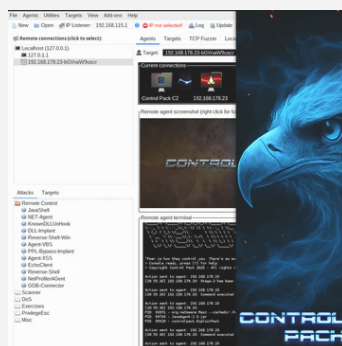
We have noticed in many post-exploitation frameworks that persistence access is a recurring weakness. The issue remains by design in their single-process execution model. This could become a real problem...

< 1/2 >

The offensive security toolkit, ready to order:



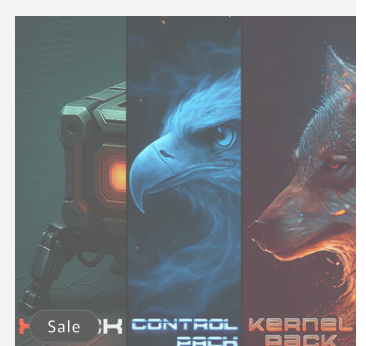
Exploit Pack
From €1.200 EUR



Control Pack
From €1.200 EUR



Kernel Pack
From €1.200 EUR



Ultimate Pack + Discount
€3.600 EUR €3.400 EUR

Choose options

Choose options

Choose options

Add to cart

< 1/2 >

Exploit Pack: The offensive exploitation framework



Control Pack Userland C2 with undetected agents

Order now



Kernel Pack: Kernel access C2 framework

Print page

Who is behind Exploit Pack, Control Pack and Kernel Pack

Frequently Asked Questions

- 1. Who is behind exploit pack?
- 2. What is exploit pack and what methods does it use?
- 3. How exploit pack works?
- 4. How exploit pack is installed?
- 5. How exploit pack is installed on Windows XP, Vista, 7, 8, 10?
- 6. How exploit pack is installed on Linux, Mac OS, Android, iOS?
- 7. How exploit pack is installed on Raspberry Pi?
- 8. How exploit pack is installed on Windows Server 2003, 2008, 2012, 2016?
- 9. How exploit pack is installed on Windows 10 IoT Enterprise?
- 10. How exploit pack is installed on Windows 10 IoT Enterprise LTSC?
- 11. How exploit pack is installed on Windows 10 IoT Enterprise N?
- 12. How exploit pack is installed on Windows 10 IoT Enterprise N LTSC?
- 13. How exploit pack is installed on Windows 10 IoT Enterprise N LTSC N?
- 14. How exploit pack is installed on Windows 10 IoT Enterprise N LTSC N?
- 15. How exploit pack is installed on Windows 10 IoT Enterprise N LTSC N?
- 16. How exploit pack is installed on Windows 10 IoT Enterprise N LTSC N?
- 17. How exploit pack is installed on Windows 10 IoT Enterprise N LTSC N?
- 18. How exploit pack is installed on Windows 10 IoT Enterprise N LTSC N?
- 19. How exploit pack is installed on Windows 10 IoT Enterprise N LTSC N?
- 20. How exploit pack is installed on Windows 10 IoT Enterprise N LTSC N?

