

You are here: [Home](#) > [Products](#) > [LANState](#) > [Download](#)**10-Strike Software**
Enjoy your network with our innovative network software**Download LANState and LANState Pro**

Warning! For a successful evaluation, please click the "Try" button on the nag screen if you do not have a purchased license key for the program.

Features	10-Strike LANState Pro	10-Strike LANState	10-Strike Network Monitor (Pro)
Program usage scenario	Working with the program on the administrator's PC, network topology discovery, host and PC management		Background service monitoring in the 24/7 mode
Graphic network map and LAN topology discovery	+	+	+
Network map exporting to MS Visio	+	-	-
Web interface for accessing the network map remotely	read only	-	full control in the Pro version
SNMP functions: SNMP information , connection tables	+	-	-
Reporting, SNMP trap, Syslog support	+	-	+
Background monitoring by service (no logon is required!)	-	-	+
Distributed monitoring (with multiple servers/networks)	limited	limited	full support in the Pro version
Remote agents with local ICMP and other checks' execution, HDD S.M.A.R.T., SSD, NVMe disk health and temperature, CPU and GPU temperature, fan speed, and NetFlow monitoring	-	-	in the Pro version
Try a free 30 day trial version	Download 61 MB Download Agent for running apps via user map menu in the Web UI	Download 58 MB	Download 300-500 MB
Buy program Check pricing	Buy	Buy	Buy

If you do not know which version to choose, please [read the full comparison table](#). LANState Pro is a network management (and monitoring) tool for administrators. It requires the user logon for its operation.

For the 24/7 background monitoring please choose the [10-Strike Network Monitor](#) product.

Current product version: 10.51 | [Version History](#)

Trial version limitations: 30-day trial period, maximum 50 hosts allowed on all maps

Free usage: up to 25 hosts on all maps

Supported languages: English, German, Spanish, Italian, Korean, Russian

Operating systems supported: Windows XP/Vista/7/8.1/10/11, Server 2003/2008/2012/2016/2019/2022

 [Download previous version 7.8 \(with old bitmap graphics engine\)](#)

 [10-Strike Software End User License Agreement](#)

System requirements: a Windows PC with network. SNMP might be required on managed switches for the network mapping (but not necessary for the program operation).

How to install the program: Download the program using the above links. Run the installation package and click "Allow" if the system asks for your permission. Follow the installation wizard's instructions, click "Next" till the "Finish" button appears. No additional components will be installed.

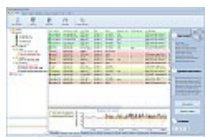
How to remove the program: Use the standard system software removing procedure (Control panel -> Add/remove programs) or use the program deletion shortcut in the program's group in the Start menu.

[BUY | CHECK PRICES](#)

What to Download Next?

Try Other Our Useful Network Software:

We offer **another network monitoring program** (which works as a service application in the background mode):



10-Strike Network Monitor - It is implemented as a **service** but does not have a graphic network device map like LANState does. The **monitoring checks** and notification methods are the same as in **LANState Pro**. If you want to monitor devices using a service, try this program!

Monitor databases, services, files, folders, processes, free space on disks, VPN connections, JavaScript and VisualBasic scripts, etc. Set up the program's response to particular events (device or service on/off) and receive notifications via email, SMS, etc.

We offer **another network scanning and diagramming program** (it's cheaper because it does not have the monitoring functions):

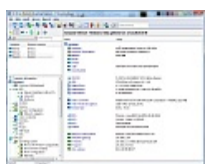


10-Strike Network Diagram - It has more advanced graphics engine, vector device icons, and better visual quality. But it cannot monitor hosts as **LANState Pro** does.

Create network diagrams and maps easily with our new program. 10-Strike Network Diagram scans your network and searches it for network devices. All found computers and switches are placed on a diagram. If your switches support SNMP, connections between devices will be drawn automatically. Just arrange devices with a mouse and save the network diagram to a file, print it, or export to Microsoft Visio.

10-Strike Network Diagram has a more powerful graphics engine and better image quality of created network diagrams comparing to **10-Strike LANState**, but it cannot monitor network devices.

We also offer the **network computer asset inventory tool**:



10-Strike Network Inventory Explorer

Create and maintain the inventory database of your network computers. **View hardware and software on network computers remotely, track hardware and software changes.** Create reports on the availability of particular programs and number of copies installed on computers. Plan upgrades, generate reports on computers with insufficient RAM size or disk space.

...and other useful tools for network administrators:



10-Strike Bandwidth Monitor

Monitor network bandwidth and traffic usage. Control bandwidth on your computers, routers, switches, printers, etc. The program can monitor your network in the 24*7 mode and notify you when the bandwidth of the traffic volume is exceeding the configured threshold on hosts. View the network bandwidth diagrams in the real-time.



10-Strike Network File Search

Search files on local network computers' shared resources and FTP servers. Search documents on a corporate file server or look up new photos and multimedia files on your neighbours' computers. The preview feature allows you to filter out the unnecessary information. Enter a search phrase or file masks and find the files you need.



10-Strike Connection Monitor

Audit access to your shared folders. Watch who gets into your files in a real-time! The program generates screen, sound, and e-mail notifications on connections to shared resources. It records a **log file** that contains the information on remote user and computer name, accessed file and folder name, date, type of access, and so on. The application also allows you to quickly enable or disable network shares when it is necessary using the program's context menu in the system tray.



Related Links:

- [Pro vs Standard](#)
- [Version History](#)

All products



Network Inventory Explorer

Inventory Hardware and Software on Network Computers



Network Monitor

Monitor Network Servers, Services, Managed Switches, etc.



LANState

Monitor and Manage Network Hosts on a Visual Map, Create Network Maps



Bandwidth Monitor

Monitor Network Bandwidth and the Internet Traffic Usage



Network Diagram

Create Network Diagrams, Discover Network Topology



Network File Search

Search Files on Network Shares and FTP Servers



Connection Monitor

Audit Remote User Access to Shares (Folders and Files)



Network Scanner (NEW!)

Free Program for Scanning Networks, Hosts, and TCP Ports



Networking Software Bundles

Order All Our 7 Networking Programs and Save Up to 38% (or \$5600)!