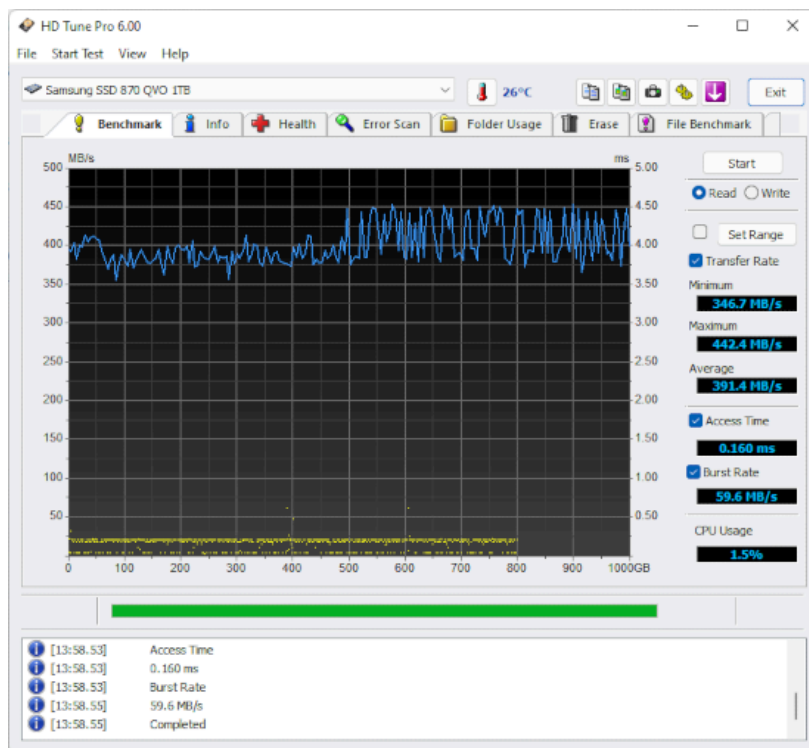


HD TUNE


[Home](#)
[Download](#)
[Buy now](#)
[Test results](#)
[Contact](#)

HD Tune Pro is a hard disk / SSD utility with many functions. It can be used to measure the drive's performance, scan for errors, check the health status (S.M.A.R.T.), securely erase all data and much more.


[Free trial](#)
[Buy now](#)

What's new

24 October 2024: HD Tune Pro **6.10** released.

Changes:

- File Benchmark: fixed issue with file size selection
- Fixed issue with fahrenheit temperature display on tray icon
- small improvements and bug fixes

15 April 2024:

HD Tune Pro 6.00 released!

Changes:

- Improved interface
- Added status window
- Benchmark:
 - Greater test resolution
 - Test range can be set
- Info: More relevant information is shown
- Health: added support for NVMe drives
- Error scan:
 - Increased resolution
 - Added data map
- Erase: increased resolution
- Random Access: Test range can be set
- Extra Tests: Test range can be set

- HD Tune Pro Drive Status: added support for NVMe drives
-

27 August 2019: HD Tune Pro 5.75 released.

Changes:

- added support for JMicron NVME to USB bridge
 - fixed window size issue
 - overtemperature is shown as warning instead of failure
-

4 August 2017: HD Tune Pro 5.70 released.

Changes:

- General:
 - added option to show drive letters in drive selector
 - improved support for OCZ and Samsung SSDs
 - added support for Windows 10
 - Basic tests: added option for continuous testing
 - Erase: range can be specified
 - Monitor: transfer sizes of 128 KB to 2 MB added
 - Save options: current pass can be specified
-

What's new

4 August 2017: HD Tune Pro 5.70 released.

Changes:

- General:
 - added option to show drive letters in drive selector
 - improved support for OCZ and Samsung SSDs
 - added support for Windows 10
 - Basic tests: added option for continuous testing
 - Erase: range can be specified
 - Monitor: transfer sizes of 128 KB to 2 MB added
 - Save options: current pass can be specified
-

7 May 2015: HD Tune Pro 5.60 released.

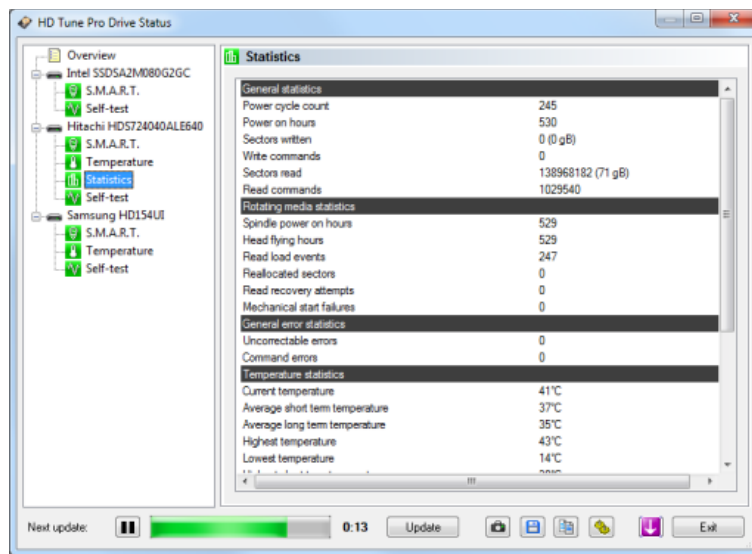
Changes:

- Improved temperature detection
 - Save options:
 - added option to export screenshot as jpg
 - time and date format can be specified
 - Added command line option to list all available drives
 - Info: improved volume detection
 - Folder Usage: improved volume detection
-

20 April 2013: HD Tune Pro 5.50 released.

Changes:

- Added new module with following functions:
 - Check health status of all connected drives at once
 - Detailed S.M.A.R.T information
 - Run S.M.A.R.T self-test
 - Device statistics
 - Temperature statistics
- Added support for more SSD drives
- Improved support for +4TB disks
- Added option to restore window position and size
- Added new warning level



1 November 2011: HD Tune Pro 5.00 released.

Changes:

- New file tests which measure:
 - sequential read/write speed
 - random 4 KB read/write speed
 - multiple random 4 KB read/write speed
- New monitor functions can show:
 - detailed performance statistics of different block sizes
 - positions where I/O activity took place
 - which programs and processes generate I/O activity
- Improved support for +2TB disks
- Added option to scan A: and B: drives
- Added option to show drive serial number on main screen
- Fixed issue with Fahrenheit temperature display

28th August 2010: HD Tune Pro 4.60 released.

Changes:

- Added temperature statistics
- Improved support for SSD
- Improved access time resolution
- Health
 - added support for more SSDs
- Random access
 - maximum access time is shown
 - added 4 KB align option
- Extra tests
 - added random seek 4 KB test
 - added 4 KB align option

22th May 2010: HD Tune Pro 4.50 released.

Changes:

- Added autosave screenshot function with extensive filter possibilities
- Error Scan
 - added speed map
 - added option to set scanning range
- Erase: added verify function
- Added option to change power settings during performance tests
- Added support for USB 3.0 devices
- Fixed negative CPU usage display with quadcore CPUs
- Fixed incompatibility issue with nVidida drivers under Windows 7 64-bit
- Fixed incompatibility issue with certain USB sticks
- Fixed incorrect position with Erase function with sector sizes larger than 512 bytes

9th January 2010: HD Tune Pro 4.01 released.

Changes:

- Added option to monitor health status during tests
 - Fixed display issue with high DPI font settings
-

28th December 2009: HD Tune Pro 4.00 released!

Changes:

- Health (S.M.A.R.T) and temperature display support for external drives
 - Support for drives larger than 2 TB
 - Supports up to 32 drives
 - Advanced S.M.A.R.T log functions
 - Added short stroke testing
 - Extra tests: quick read/write tests
 - Added cache test
 - More information is shown
 - Benchmark tests can be run seperately
 - Added option to perform the transfer rate test on the entire surface
 - New command line parameters
-

29th December 2008: HD Tune Pro 3.50 released!

Changes:

- Added Random Access test
 - Added option to perform quick Error Scan with command line parameters
-

5 July 2008: HD Tune Pro 3.10 released!

Changes:

- Added menu
 - Fixed display problem with high DPI font settings
-

12 February 2008: HD Tune Pro released!

HD Tune Pro is an extended version of HD Tune which includes many new features such as: write benchmark, secure erasing, AAM setting, folder usage view, disk monitor, command line parameters and file benchmark. Click [here](#) for more information and to download a trial version.

A new version of HD Tune is also available. Version 2.55 includes several minor improvements.