



# NetSetMan Pro

## Network Settings Manager Professional

**Current Version:** Due to an incompatible change in the software signature certificate, versions prior to **5.3.2** cannot be updated automatically. Please download the current setup file and install it as an update. Customers of the Pro version can find it in the [customer area](#) as usual. (⇒ [Changelog](#))

### NetSetMan 5.4.0 (⇒ [What's new?](#))

Are you tired of manually changing your location-based network and system settings on your laptop computer over and over again?

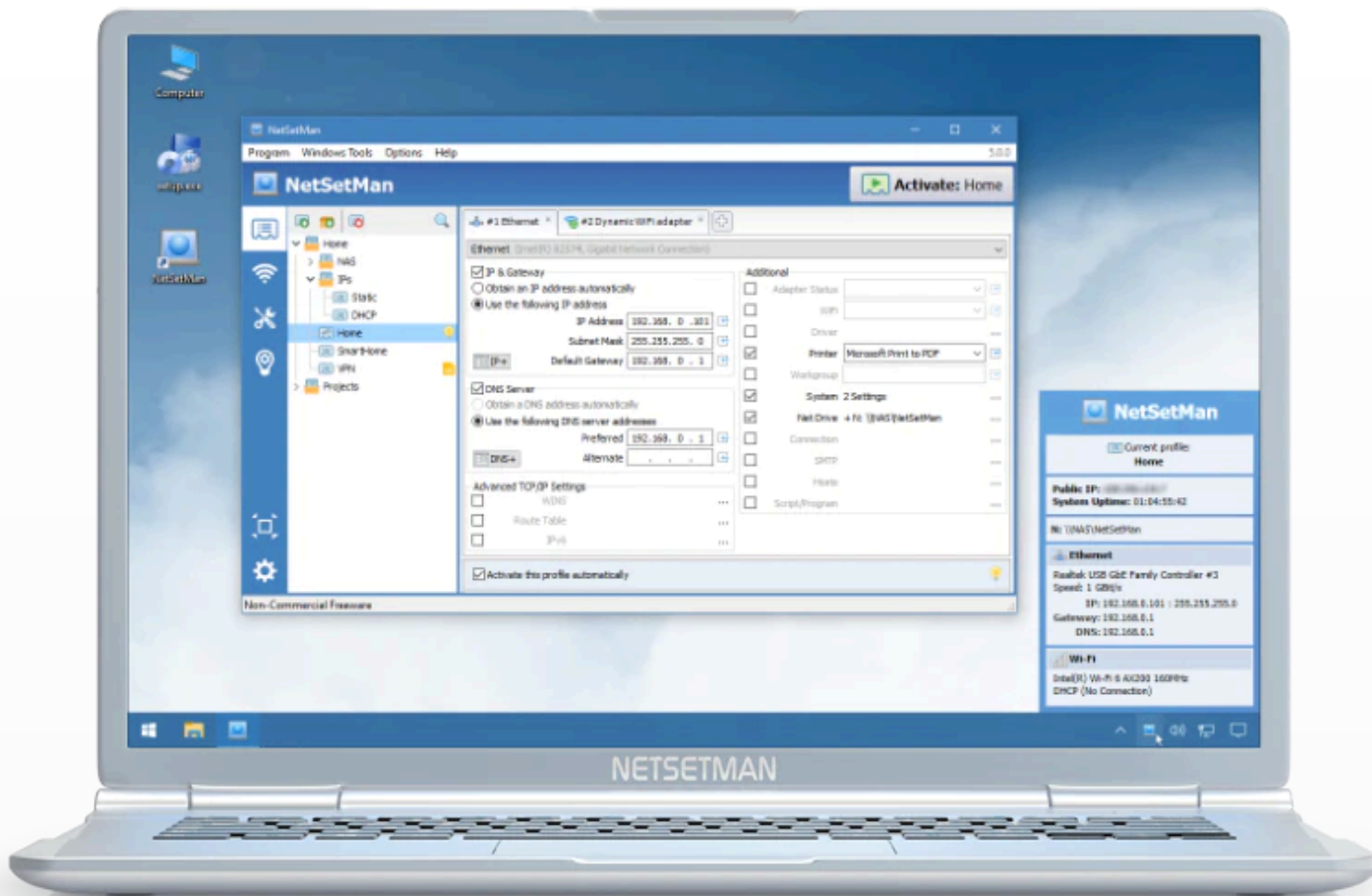
Then NetSetMan is your solution. It will do the work for you. Switch between configuration profiles for different locations instantly!



### Stay Up-To-Date!

- Read the [changelog](#)
- Like NetSetMan on [Facebook](#)
- Subscribe to the [RSS feed](#)

[Download NetSetMan](#)



# Features

NetSetMan is a network settings management software that lets you easily switch between your preconfigured profiles!

## Languages

-  Bulgarian
-  Chinese (Simpl.)
-  Chinese (Trad.)
-  Croatian
-  Czech
-  Dutch
-  English
-  French
-  German
-  Hungarian
-  Italian
-  Japanese
-  Korean
-  Polish
-  Portuguese
-  Russian
-  Serbian
-  Slovenian
-  Spanish

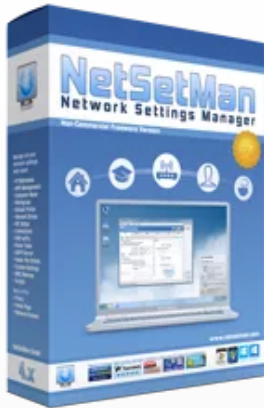


Feature-List	NC-Free	Pro
<b>Settings</b>		
IP Addresses	✓	✓
Workgroup	✓	✓
Default Printer	✓	✓
Network Drives	✓	✓
DNS Suffix	✓	✓
Route Table	✓	✓
SMTP Server	✓	✓
Hosts File Entries	✓	✓
System Settings	✓	✓
Computer Name	✓	✓
MAC Address	✓	✓
NIC Status	✓	✓
Protocol Bindings	✓	✓
LAN Settings (Speed/Duplex, MTU, VLAN, ...)	✓	✓
Connections (RAS/DUN/PPP/VPN)	✓	✓
Scripts (BAT, VS, JS, ...)	✓	✓
Program Execution	✓	✓
Proxy	✗	✓
Network Domain	✗	✓
<b>General</b>		
WiFi Management <b>New!</b>	✓	✓
AutoSwitch	✓	✓
Tray-Info for all current IP settings	✓	✓
Tray-Menu for quickly switching profiles	✓	✓
NetSetMan Service for usage without admin privileges	✓	✓
Pre-Logon profile switching	✓	✓
Administration for defining permissions	✓	✓
Command line activation	✓	✓
Tools: Network Scanner, Connections, Console, ...	✓	✓
Quick access to frequently used Windows locations	✓	✓
Commercial Use / Can be used at work	✗	✓
Use in a network domain	✗	✓
Use with Windows Enterprise/Server	✗	✓
Profiles	8	Unlimited
Price	<a href="#">Free</a>	<a href="#">25-49€</a>

**NetSetMan offers what you've been missing in Windows until now:** A powerful, easy-to-use interface to manage all your network settings at a glance. Give it a try and you'll never want to be without it again.

**Activate a stored profile with one click or even completely automatically!**

## Download



↓ NetSetMan 5.4.0 (7MB)


**3in1:** Setup, Update & Portable in one file!

**License:** Non-Commercial Freeware

**Release date:** 2025-03-05

**Language:** Multilingual

**For Windows:** 7/8/10/11 (32/64 Bit)

 [Updating from version 4.x?](#)

If you like NetSetMan, please show your support:



## License

**NetSetMan is Freeware for non-commercial use.**

You may use NetSetMan for free as long as you don't save paid working time. Any commercial use (at work, company notebook, etc.) requires a [NetSetMan Pro](#) license.

For detailed information please refer to the [NetSetMan Software License Agreement](#)